



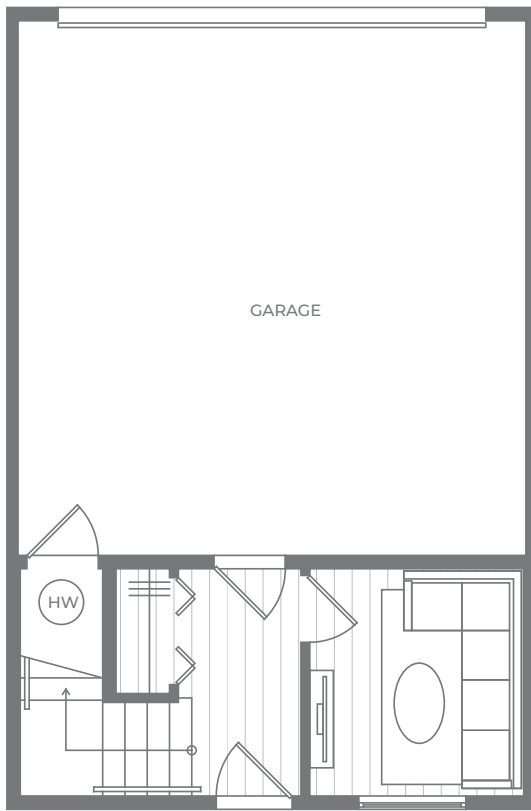
Three Bedroom + Den

TOTAL SQ FT 1,463

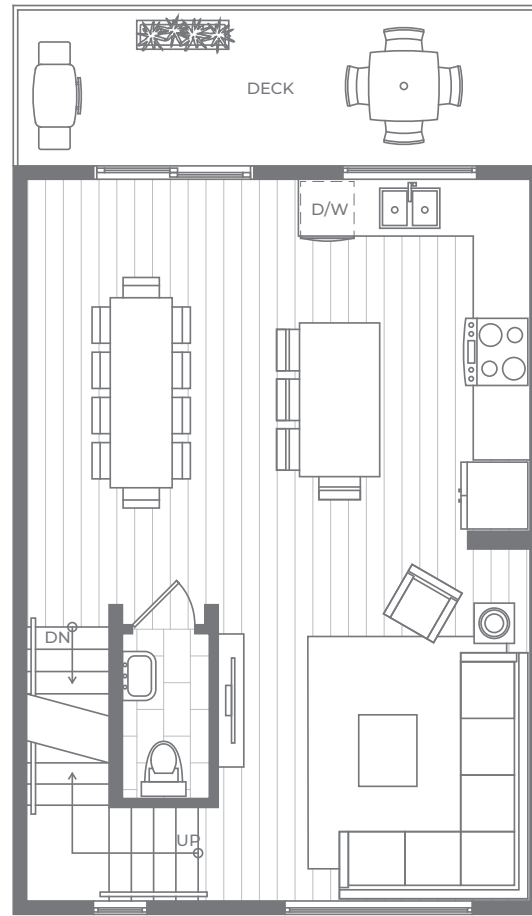
INTERIOR SQ FT 1,327

DECK SQ FT 136

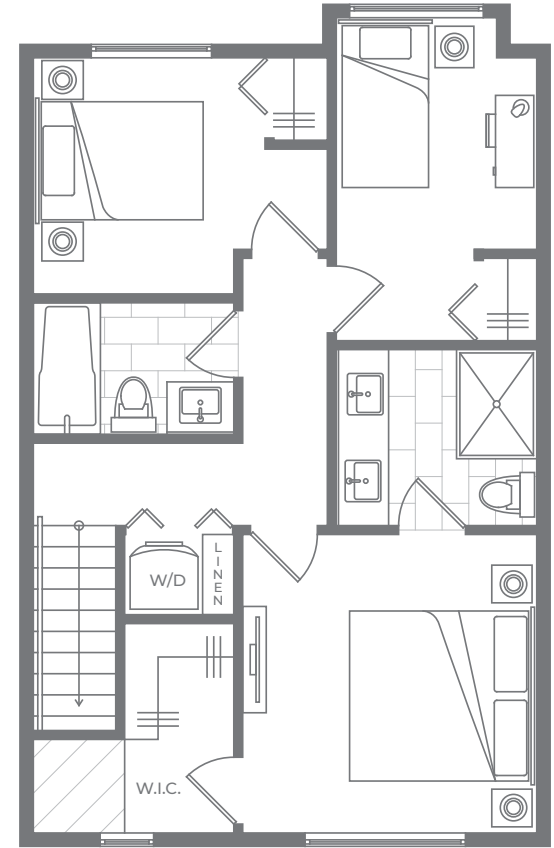
FLEETWOOD VILLAGE 2



GROUND



LIVING



SLEEPING

The developer reserves the right to make minor modifications or substitutions to building design, specifications or floor plans if necessary. All sizes and dimensions are approximate and based on Architectural measurements. Reverse plans occur throughout the development. Renderings are an artist's conception and are intended for reference only. Deck and patio sizes may vary. Please refer to disclosure statement for specific offering details. E.&O.E.